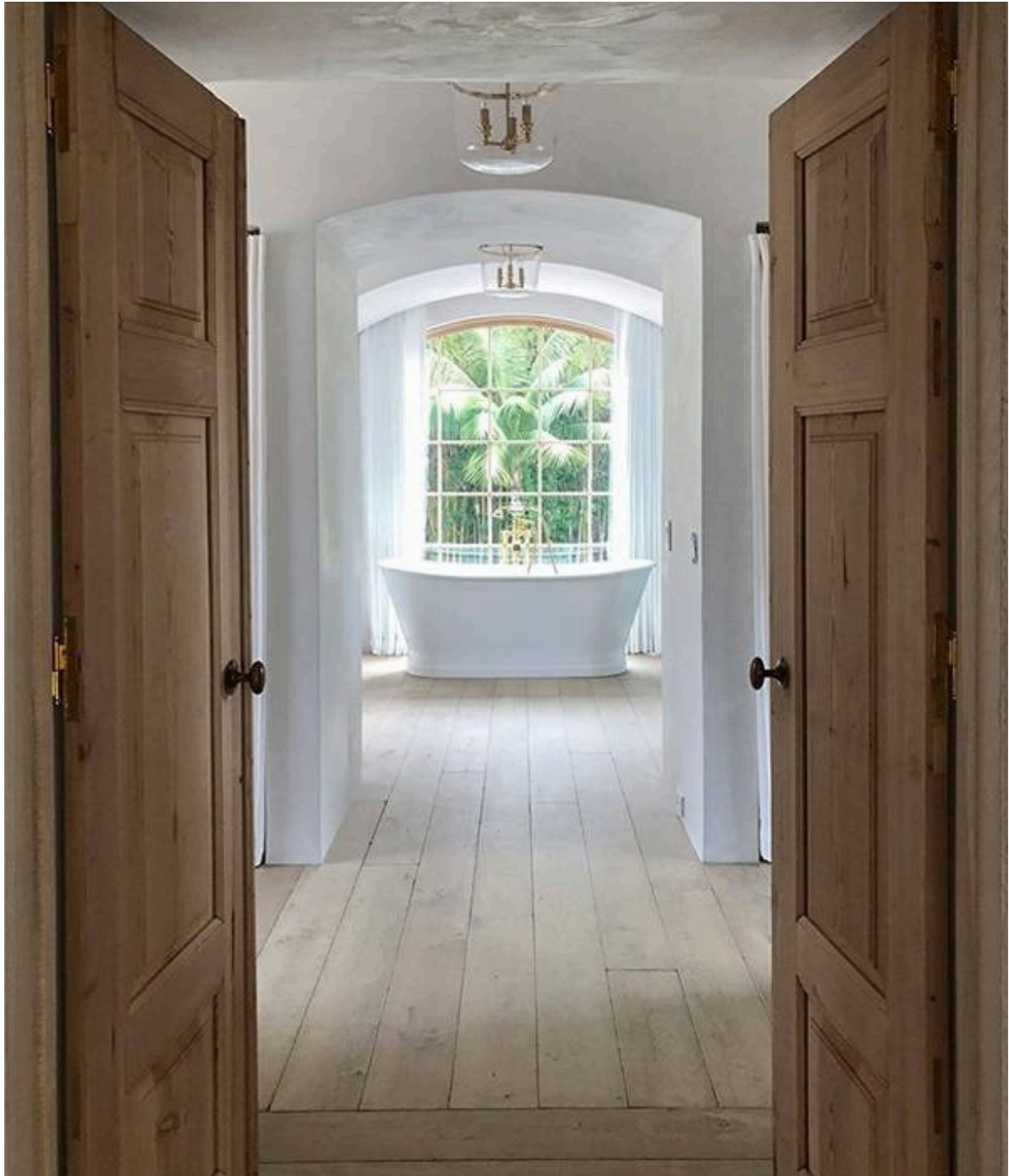


Oak Heritage

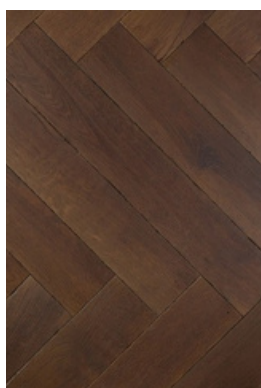


The Heritage range features French oak boards that are aged and distressed to replicate the appearance of authentically time-worn timber.

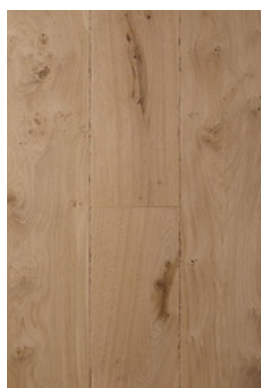
Each board includes broken edges and surface wear that reflect natural wear patterns over time.

Boards show subtle shade variations and mild discoloration around knots, enhancing the visual depth and providing a floor with a naturally timeworn appearance. The result is a consistent lived-in surface that maintains the character of aged wood while meeting modern flooring standards.

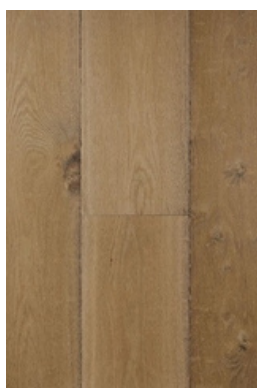
Certain finishes are treated with hard wax oil, while others are lacquered, providing surfaces that are durable, easy to clean, and simple to maintain.



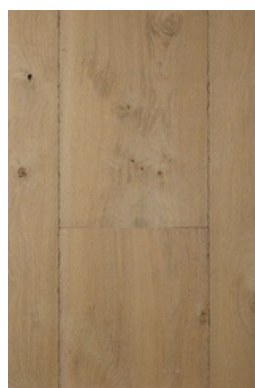
Basilica



Chalice



Chapter



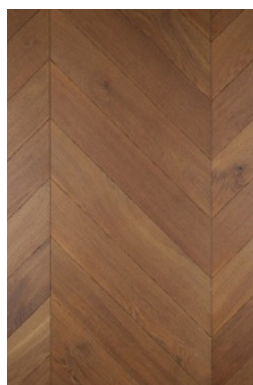
Cloister



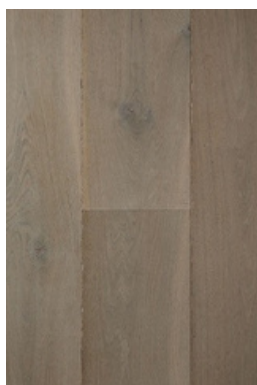
Dome



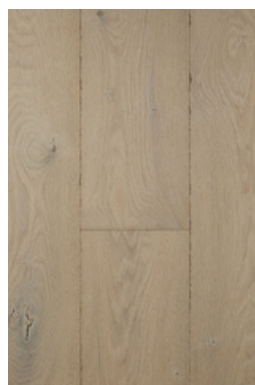
Nave



Priory



Spire



Transept



Vault

Planks: From £149 sqm

Widths available: 90mm or mixed width: 120, 140, 160, 180, 200, 220, 260, 300mm

Thickness available: 15 & 20mm

Duplex engineered & Solid timber

Rustic Grade

Herringbone & Chevron: From £214 sqm

Sizes available: 90 x 540mm, 120 x 720mm

Thickness available: 15 or 20mm

Duplex engineered or Solid timber

Rustic grade

Versailles Panel: From £294 sqm

Size available: 700 x 700mm, 1020x1020mm

Thickness available: 15 & 20mm

Solid timber

Rustic grade

Prices do not include VAT or delivery

Technical Specifications

SPECIES	European oak
APPLICATION	Commercial and residential (Indoor)
CONSTRUCTION	Duplex engineered 4 or 6mm top layer oak 15 or 20mm Solid Oak
BEVEL	Hand scraped as standard
INSTALLATION TECHNIQUE	Nail, glue bonding or floating
SUITABLE FOR UFH	Yes, when duplex engineered
FIRE CLASSIFICATION	EN: 13501: Dfl-S1
THERMAL CONDUCTIVITY	0.119-0.17 λ W/mK
HARDNESS	4,982 N (Janka)

Timber floors are easy to care for, please call us for further information on the best way to look after your floor.

Timber is a living material. A wooden floor, although no longer growing as part of a tree, is still very much part of its environment. As such, it responds to the light, temperature, humidity and wear to which it is exposed.

As the floor ages the colour of the wood will mellow and change. This is a natural process that occurs as the surface of the wood is exposed to oxygen in the air and to ultraviolet light from the sun. Painted surfaces, upholstery, furniture and rugs all undergo this same process over time.

After several years, you may wish to have the floor surface sanded down and refinished. You could then choose to re-oil the floor, or have it stained first and even finished in lacquer.



EAST:
Unit 7
11-29 Fashion Street
London E1 6PX
020 7221 8188

WEST:
61 Paddington St
London W1U 4JD
020 7486 4838

Registered in England & Wales: Solid Floor Ltd. Unit 7, 11-29 Fashion Street, London E1 6PX
Company Reg No: 03287805 | VAT Reg No: 710 4793 50
FSC licence: C117337 | FSC COC: CU-COC-828136 | PEFC COC: CU-PEFC-828136
solidfloor.co.uk team@solidfloor.co.uk solidfloor solidfloor